



Growth
with
Goodness

adani





Growth,

the way it is
meant to be.

Growth, to us, isn't about the businesses we're involved in. Growth is about the real impact we can create. It's about the lives we can touch, the communities we can nourish, and the future we can inspire. With our sheer size of operations, we have reached out to the remotest of geographies with ease. Be it power transmission, solar energy generation, or agri logistics, we go for large-scale execution that benefits millions of Indians. We are proud of this quality of our operations, which we have consciously extended beyond our businesses to impact healthcare, education, employment generation, and the creation of sustainable livelihoods for the communities that deserve them. We believe that growth can lead to goodness that inspires and drives us.

Not India's
largest
integrated
organisation,
but India's
largest
goodness
creators.

Racing ahead of others can surely reserve the apex seat, but how far will it take us? This is a question that keeps surfacing in our retrospection. We believe that Adani Group is not just in the business of Resources, Logistics, Energy, and Agri. Rather, it strives to transform lives by creating opportunities for employment and a sustainable livelihood, using our business as the medium to attain these goals of goodness. For us, the title of the largest integrated organisation doesn't ring a bell; the day we come to be known as the largest changemakers is the day we will achieve our purpose, philosophy, and vision of Nation Building. We want our achievements to become a beacon of goodness, moving lives, bridging oceans, and bringing the world closer to millions. We believe our efforts, unless they enlighten lives, are futile. We are headquartered in Ahmedabad, India, and have operations across the world. We owe our success and leadership position to our core philosophy of Growth with Goodness.

To bring goodness to the world,
it helps to start with yourself.
Our vision and values define this goodness.



Vision

To be a world-class leader in businesses that enrich lives and contribute to nations in building infrastructure through sustainable value creation.



Courage

We shall embrace
new ideas and business



Trust

We shall believe in our
employees and other
stakeholders



Commitment

We shall stand by our promises
and adhere to the highest
business standards

When it comes to choosing a path towards growth, we choose the sustainable one.

At Adani, sustainability is an essential part of decision-making. It is an indispensable step towards a better future and our goal of contributing to Nation Building. We align with the Sustainable Development Goals (SDGs) set by the United Nations with a focus on areas in which the Group is uniquely positioned to create large-scale positive impact.

The majority of companies in the Adani portfolio are sector leaders in India and aim to be among the top companies globally in terms of ESG performance. We have undertaken a rigorous exercise to understand the material topics and priorities across all our businesses and adhere to global and national reporting frameworks to ensure transparent disclosures.

We are working in the areas identified by our material topics and have developed strategies to address the associated risks and opportunities. Our investments are aligned with national policies to develop technologies and infrastructure to create solutions that not only bring growth but goodness as well.

Growth for us is the impact we have created, the lives we have touched, the communities we have empowered, and the future we inspire.

Sustainable Development Goals



ESG Thrust Areas:

Environment

- Emission mapping cum management
- Climate change and energy management focus
- Decarbonising through operations and mobility
- Water stewardship programme
- Biodiversity commitment
- Green transformation
- Waste management programmes

Social

- Our people
 - Talent attraction and development
 - Diversity and inclusion
 - Health, safety, and wellbeing
 - Human rights
- Sustainable supply chain
- Community engagement programmes
- Customer relationships and engagement

Governance

- Board structure, diversity, effectiveness, experience, and tenure
- Business ethics and compliance
- Code of Business Conduct
- Risk and Crisis Management
- Transparent disclosure commitment

Key Achievements:

- All companies in the Adani portfolio are categorised in the Management to Leadership bracket by CDP; signifying their dedication to climate change mitigation and adaptation.
- AGEL became the first renewable power producer in the country to have an operational portfolio of more than 10 GW.
- 52.3 million tons of cumulative CO₂ emissions avoided by AGEL in FY23-24.
- All operational sites of AGEL and AESL are certified Zero Waste-to-Landfill and Single-Use Plastic Free.
- AESL has increased the renewable energy share in bulk power purchase from 3% in FY21 to over 34% in FY24.
- ACC and Ambuja Cements are among the lowest emission intensity cement producers globally.
- Four of the Adani companies have achieved water positive status for their operational assets – AGEL, AESL, ACC, and Ambuja Cements.
- The Adani portfolio of companies has grown more than 40 million trees till FY24.
- Majority of companies have achieved Single-Use Plastic Free status and aim to reuse, recycle, and recover majority of the waste generated in operations.

Going Forward: Adani's ESG Commitments

- Five companies in the Adani portfolio - AGEL, AESL, APSEZ, ACC, and Ambuja Cements - have committed to become Net Zero by 2050 or earlier.
- AGEL plans to deliver 50 GW affordable, reliable, and clean energy by 2030.
- AGEL is developing a RE project of 30 GW capacity at Khavda in Gujarat. Built across 538 sq km, it will be the planet's largest power plant regardless of energy source.
- APSEZ is committed to source 100% of electricity from RE sources by FY25.
- ACC and Ambuja Cements target to reach 60% green power by FY28.
- Developing one of the world's most ambitious and cost-competitive integrated Green Hydrogen ecosystems, comprising:
 - 10 GW solar PV module manufacturing capacity with supporting ancillaries
 - 5 GW wind turbine manufacturing capacity
 - 5 GW electrolyser manufacturing capacity
- Comprehensive in-house EPC capabilities
- Production of Green Hydrogen and its derivatives, with associated port infrastructure
- Adani Group has pledged to grow 100 million trees by 2030, as a commitment to the 'Trillion trees platform' of the World Economic Forum.
- Companies in the Adani portfolio are focusing on pilot projects that aid in decarbonisation by utilising Green Hydrogen and its derivatives:
 - AEL is among the first in the world to deploy Green Hydrogen powered mining trucks in collaboration with Ashok Leyland and Ballard
 - APL is undertaking a feasibility study with IHI and Kowa supported by Japan's NEDO for co-firing 20% green ammonia in thermal power plants, leading to emission reduction of ~19%
 - ATGL aims to blend upto 8% Green Hydrogen in city gas distribution network, which can reduce emissions by up to 4%

Creating immense value by keeping pace with the changing times

Phase 1

Ports to logistics platform



15 ports in India, 12 logistics parks – Largest transport utility



15.75 GW of thermal power generation capacity



AWL has one of the largest range of staples which includes edible oils, wheat flour, sugar, rice, etc.

Phase 2

Energy and gas utility platform



20,000+ ckm of transmission lines, including the longest HVDC line



Over 11 GW of operational renewable energy portfolio



124 districts in the gas distribution network

Phase 3

Transformational opportunities to provide the quantum leap



7 operating airports in India



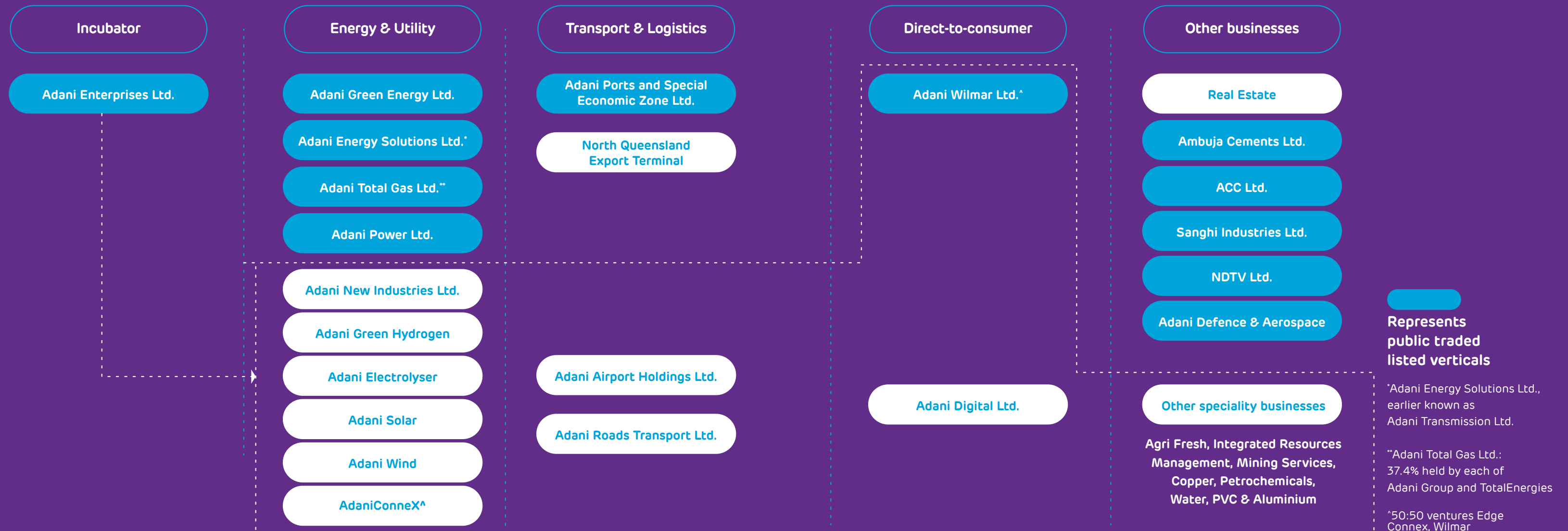
Harnessing expertise in infrastructure to cater to the growing demand of the digital economy



Wastewater treatment and desalination projects

Uplifting lives in more ways than one.

Adani Group Portfolio



Diversifying businesses to meet our core objective of Nation Building.

The virtues of speed, scalability, and sustainability are essential for any organisation to achieve excellence and growth. With our diverse businesses and global outreach, we deliver smart solutions to our customers that are rooted in each of these virtues.

Contributing to India's Growth Story - Adani Group at a glance

Workforce
Over **43,000**

Cargo Handled across Ports
420 MMT

City Gas Distribution Volume
865 MMSCM

Thermal Power Generation
15.75 GW (incl. 500 MW under AESL)

Mining Services
32.55 MMT
(Production from 5 mines)

Media
500 mn
Combined Audience

Renewable Power
10.9+ GW*
Operational Portfolio

Solar Manufacturing
4 GW Capacity

Wind Manufacturing
1.5 GW Capacity

Realty
1.5 mn sq m
Spaces Delivered

Passengers Handled at Airports
74.8 mn

Transmission
20,509 ckm
Operational Capacity

Edible Oil
19.4% Market Share

Integrated Resources Management
88.2 MMT Operational Capacity

Cement Capacity
89 MTPA*

Highways
5000 lane km

Ports and Logistics | Power | Transmission | Renewables
Natural Resources | Agri Logistics | Edible Oil | Gas Distribution
Real Estate | Defence and Aerospace | Roads, Metro, Rail, and Water
Data Centre | Airports | Agri Fresh | Cement | Media

Note: Figures as per Annual Report FY24 | *Operating Capacity as on March 2024



Adani Green Energy Ltd.

An environment free from carbon emissions where every child can grow up breathing pollution-free air is what we dream of creating, having, and managing to enrich lives with our renewable energy plants. Adani Green Energy is one of the world's largest and India's largest renewable energy companies, pioneering an effort to help India transition to renewable power.

We develop, build, own, operate, and maintain utility-scale grid-connected solar, wind, hybrid, and hydro pumped storage projects. The electricity produced is supplied to central and state government entities and government-backed corporations. Adani Green Energy continues to set higher global benchmarks and rewrite the world's planning and execution standards for ultra-large renewable energy projects. Adani Green Energy is developing the world's largest renewable energy project of 30,000 MW on barren land at Khavda in Gujarat. Spread across 538 sq km, this is five times the size of Paris. Within just 12 months of breaking ground, Adani Green Energy has operationalised 2,000 MW and has started supplying power to the national grid.

Adani Green Energy has an operational portfolio of over **10.9 GW** and has set the goal of delivering **50 GW** renewable energy by 2030.

Verticals:

Solar Energy

Wind Energy

Hybrid Energy

Hydro Pumped Storage

Note: Figures as per Annual Report FY24



Solar Energy

Nearly half a decade ago, we were the fastest of the starting blocks, having set up the largest solar power plant in the world at Kamuthi in Tamil Nadu. Adani Green Energy's pursuit of growing our renewable portfolio has been second to none. We are probably driving one of the fastest-ever decarbonisation programs, given our existing footprints and robust pipeline.

Our existing portfolio of renewable power-generating assets stands at over 10.9 GW, of which 7.3+ GW is the solar energy capacity. Adani Group has committed to investing over 70% of its budgeted Capex of the energy vertical into clean energy and energy-efficient systems. As a testimony to our commitment, our renewable energy operating capacity since FY19 has grown at a CAGR of 41%, outpacing the renewable capacity growth in India at 13% CAGR.



Wind Energy

Harnessing the power of wind energy can provide RE power to the grid throughout the day, with a relatively higher Capacity Utilisation Factor (CUF). Adani Green Energy develops, builds, owns, operates, and maintains utility-scale grid-connected wind projects and generates revenue through the sale of electricity to central and state government entities and government-backed corporations.

For wind project development, we continuously evaluate various regions of the country for wind resource potential and have developed an operational portfolio of 1.4 GW.

Adani Green Energy had already installed many windmasts across India in resource-rich areas of our country. This has allowed us to confirm the site's wind resource potential and enabled micrositing. The adoption of higher-efficiency machines, farm-level aggregation of wind machines, advanced algorithms for resource identification, and optimisation of last-mile connectivity of wind turbines has led to enhanced efficiencies.



Hybrid Energy

Variability in solar and wind generation has emerged as a concern in the large-scale adoption of renewables since it contributes a major share of the energy mix. The hybridisation of wind and solar plants is a developing solution that will reduce this variability due to the complementary nature of their generation profile: solar generation is higher during the day, while wind generation can be higher at night.

Hybrid projects would have much higher capacity utilisation, thus removing the intermittency challenge. Such projects also enjoy the additional benefit of reduced costs associated with sharing transmission lines. AGEL's approach of thorough inspection to identify good locations for hybrid energy and to create a proactive transmission plan alignment with in-depth insights about resource and generation potential has made it the largest hybrid portfolio owner in the country.

Adani Green Energy has operationalised India's 1st and world's largest wind solar hybrid cluster of 2.14 GW at Jaisalmer, Rajasthan.

Our USPs:

-  Deep know-how of regulatory landscape
-  Well-established relationships across the energy ecosystem
-  Timely execution of large or complex assets
-  Operational excellence
-  Geography spread
-  Competitive project cost
-  Multi-year resource planning



Hydro Pumped Storage Project (PSP)

India's green power revolution is underway at an accelerated pace. This necessitates developing utility-scale storage projects in a speedy and cost-effective manner to aid the base load requirements. Hydro Pumped Storage, a mature and proven technology, emerges as a possible solution. During periods of ample sunlight and wind, water is pumped to higher-elevation reservoirs. Conversely, when solar or wind power diminishes, water is released to lower reservoirs, effectively filling gaps during peak demand and generating required electricity.

Adani Green Energy has commenced construction work on its first Hydro Pumped Storage Project (PSP) of 500 MW on the Chitravathi river. The project is located at Peddakotla in Sri Sathya Sai district of Andhra Pradesh. Adani Green Energy has a development pipeline of the Hydro Pumped Storage Project (PSP) across Andhra Pradesh, Maharashtra, Tamil Nadu, and Telangana. In the first phase, Adani Green Energy plans to develop 5+ GW PSP capacity by 2030.



Adani Ports and Special Economic Zone Ltd.

We all have stories of growth. But when these stories empower farmers and their families or elevate small-scale businessmen and their customers, the nation's future becomes a story of goodness.

Adani Ports and Special Economic Zone Ltd. is bridging India to the world, erasing all limitations of geography with faster and more efficient movements.

Verticals:

Ports

Logistics

Agri Logistics

SEZ

Dredging

Marine Services

Oil & Gas Terminalling Services



Ports

Adani Ports and Special Economic Zone Limited (APSEZ) is India's largest commercial port operator, contributing to the country's growing trade. It is spread across eight maritime states – Gujarat, Goa, Kerala, Andhra Pradesh, Maharashtra, Tamil Nadu, Odisha, and West Bengal, as well as in Karaikal in Puducherry – giving it a national presence. The port facilities are equipped with the latest cargo handling infrastructure, which is both best-in-class and capable of handling the largest vessels calling at Indian shores. Our ports can handle diverse cargo: dry cargo, liquid gas, crude, and containers.

APSEZ has further strengthened its global reach through strategic collaborations, such as its recent partnership with Haifa Port in Israel and its greenfield development of an international terminal in Colombo, Sri Lanka and Dar es Salaam, Tanzania, further enhancing its global reach and facilitating international trade connections.

Logistics

Adani Logistics Limited (ALL), a diversified end-to-end logistics service provider, is present in all major markets and handles varied customers across segments like Retail, Industrial, Container, Bulk, Break-Bulk, Liquids, Auto, and Grain Handling. ALL operates 12 multimodal Logistics Parks across India. These are located at Patli, Tumb, Kilaraipur, Nagpur, Kishangarh, Malur, Taloja, Kanech (POL tank farm), Mundra, Loni, Virochannagar, and Valvada. ALL operates 129 rakes (65 container, 54 GPWIS, 3 AFTO, and 7 agri), 2.42+ mn sq ft of warehousing space, 6,000+ containers and 1.2 million metric tonnes of grain silos.



Agri Logistics

Those who feed us deserve their fair share. We, at Adani, ensure that farmers get their due credit for every drop of sweat they've shed in generating the best-quality produce for the nation. We rely on our scale to bring about this goodness. Adani Agri Logistics is a pioneer in bulk handling, storage, and transportation (distribution) of food grains and provides an end-to-end bulk supply chain solution to the Food Corporation of India and various state governments. Twenty (20) hi-tech Silo storage facilities are currently operational across India with an aggregate storage capacity of 1.2 MMT, while 70 more Silo units with a capacity of 3 MMT are under construction. The business connected major foodgrain-producing states (Punjab, Haryana, and Madhya Pradesh) with consumption centres in Karnataka, Tamil Nadu, Maharashtra, West Bengal, Uttar Pradesh, and Bihar through a pan-India network of procurement and distribution silos. Farmers and PDS consumers are the main beneficiaries of this concept, as well as significant savings to the government exchequer on gunny bags, labour, and transportation in the bulk handling concept, which was meticulously conceived by the GOI.

SEZ

Mundra SEZ, India's largest port-based multi-product special economic zone cum domestic tariff area offers the following features:

- Covering over 15,000+ hectares of land in the vicinity of the port
- Flexibility to choose from Special Economic Zone (SEZ) / Domestic Tariff Area (DTA) / Free Trade Warehousing Zone (FTWZ)
- Access to Multi Modal Logistics - connectivity via road, rail, sea, and air, enabling business to serve their customers anywhere within the country and abroad
- Plug-and-play Infrastructure with uninterrupted and reliable supply of power and water, ensuring optimal efficiency and productivity
- A thriving social infrastructure in the vicinity comprising of Educational Institutes, Healthcare Facilities, and Recreation that enhance the quality of life
- Customised solutions to meet the needs of diverse industries, flexible leasing options, on-site assistance on a best effort basis to streamline operations and maximise efficiency



Dredging

APSEZ currently owns 28 dredgers, boasting India's largest Capital Dredging capacity and a growing Maintenance Dredging fleet. Well-maintained dredgers, highly motivated and trained personnel, in-house innovative workshops, dry dock facilities, and survey support are vital strengths that enable our efficient operations.

Oil & Gas Terminalling Services

IndianOil Adani Ventures (formerly known as IndianOil Tanking), headquartered in Vikhroli (Mumbai), is a midstream infrastructure service and solution provider to the Oil, Gas, and Chemical Industries with domain expertise in Terminalling Services, Renewable Energy in India, and Build Capabilities globally. Since its inception in 1996, the company has combined the strength and reputation of its parent companies, Indian Oil Corporation (IOC) and Adani Ports and SEZ (APSEZ), to provide customers with unparalleled logistics services and technical solutions. IAVL is able to cater to every requirement, from conceptualising to commissioning and operating bulk liquid storage facilities.





Trucking

Adani Road Logistics serves as a tech-driven and customer-focused player catering to container movement and bulk cargo transportation in the B2B segment through approximately 1,000 owned assets as well as a network of trustworthy and reliable road freight partners. We offer a full range of best-in-class road transportation services at most major ports, hubs, and ICDs across the country and are also scaling up operations at power plants, cement sectors, renewable energy parks, etc. Adani Road Logistics operates a fleet of vehicles in all sizes and dimensions to cater to the needs of any commodity, be it a container, pallet, or high and heavy shipment. Key value propositions for our customers include reliability and dependable service through trained drivers who adhere to strict safety protocols to ensure a safe and secure delivery every time, real-time visibility and tracking, optimised route planning, exception monitoring, data-driven insights, and analytics.

Marine Services

Adani Harbour Services Limited (AHSL), with over 25 years of experience, provides port and marine services to government ports, private ports, LNG terminals, offshore facilities, FPSOs, SBMs, and petroleum refineries, among others. AHSL's subsidiary, Ocean Sparkle Limited (OSL), operates primarily in India with expertise in comprehensive port Operations & Management Services (O&M) at various major and non-major ports, LNG terminals, and offshore terminals.

The Adani Harbour International DMCC (TAHID), with a strategic focus on international markets, was established in Dubai in 2023 to spearhead a new era of maritime excellence and innovation. TAHID extends marine services and has established its strong presence in Mexico, Sri Lanka, and Oman.

AHSL, with its subsidiaries, is the largest professionally managed Indian entity engaged with its fleet of 120 vessels, which inter alia includes 112 tugboats and other marine crafts such as PSVs, Pilot Boats, and Mooring Crafts.



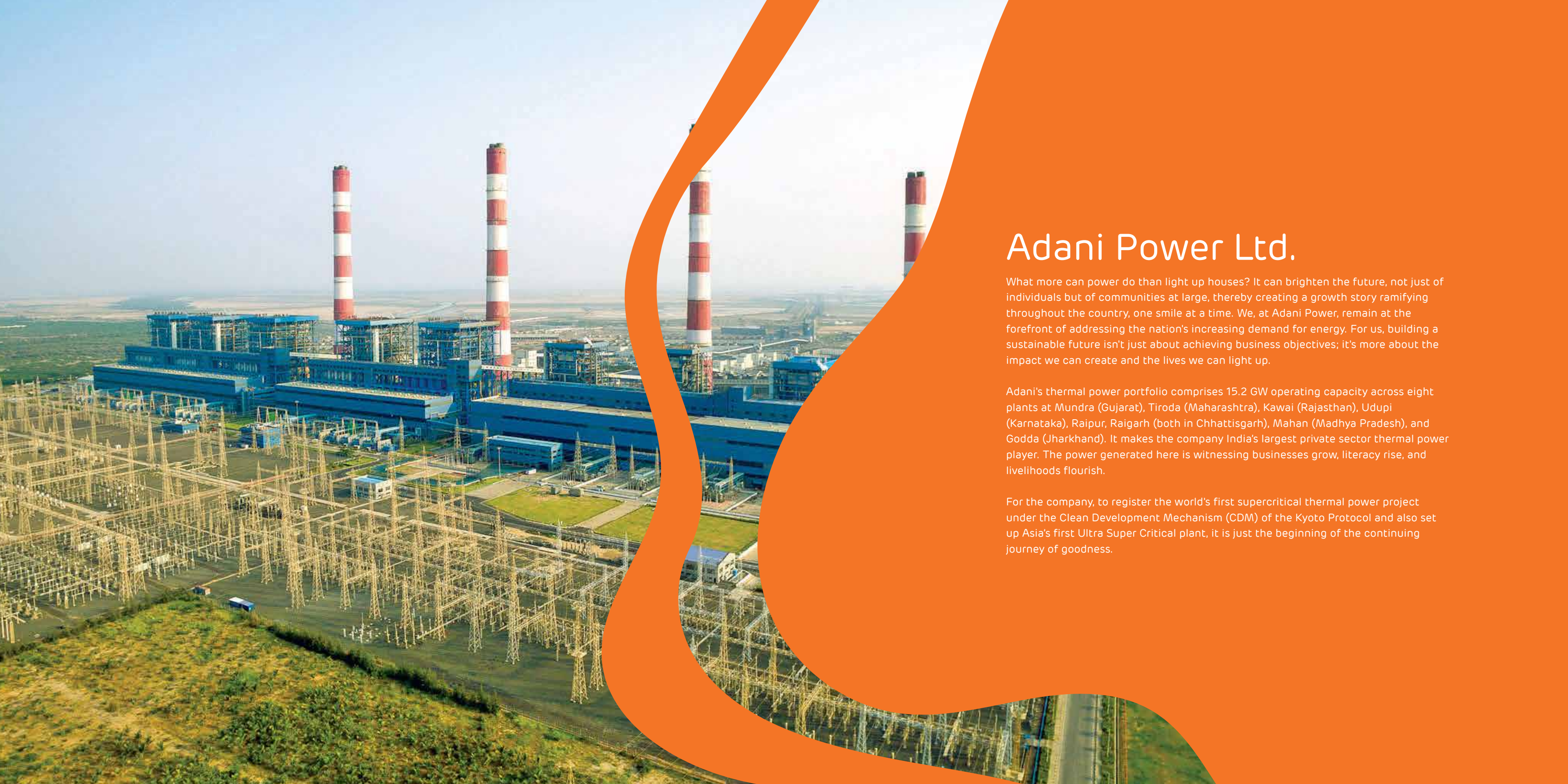
Adani Energy Solutions Ltd.

Adani Energy Solutions Ltd. (AESL), earlier known as Adani Transmission Ltd., is India's leading energy solutions company in the areas of Transmission, Distribution, Smart Metering, and District Cooling.

AESL is India's largest private sector power transmission company with 20,000+ ckm of transmission lines and 57,000+ MVA of transformation capacity. We have invested in the latest technologies, resulting in the highest network availability of over 99.6% in the country, which corresponds to the best global standards. AESL is leading the charge by developing 12 GW of renewable power evacuation infrastructure within the world's largest 30 GW renewable energy project in Khavda, Gujarat. This monumental endeavour isn't just transforming India's renewable sector but is also making waves on a global scale.

In distribution, AESL is India's largest private sector distributor, serving 12+ million consumers in metropolitan Mumbai and the industrial hub of Mundra SEZ with 99.99% reliability. The company is on track to meet 60% of the Mumbai region's power demand through renewable power by FY27, up from ~35% currently. AESL has been rated as the nation's top power distribution utility by GOI (through McKinsey and PFC) twice in a row. AESL is on course to become India's leading smart metering integrator with an order book of over 22.8 million meters across five states. In district cooling, the company offers Cooling-as-a-Service to mixed-use real estate projects.

AESL is not just reshaping India's energy landscape but also setting new benchmarks for global sustainability and reliability.



Adani Power Ltd.

What more can power do than light up houses? It can brighten the future, not just of individuals but of communities at large, thereby creating a growth story ramifying throughout the country, one smile at a time. We, at Adani Power, remain at the forefront of addressing the nation's increasing demand for energy. For us, building a sustainable future isn't just about achieving business objectives; it's more about the impact we can create and the lives we can light up.

Adani's thermal power portfolio comprises 15.2 GW operating capacity across eight plants at Mundra (Gujarat), Tiroda (Maharashtra), Kawai (Rajasthan), Udupi (Karnataka), Raipur, Raigarh (both in Chhattisgarh), Mahan (Madhya Pradesh), and Godda (Jharkhand). It makes the company India's largest private sector thermal power player. The power generated here is witnessing businesses grow, literacy rise, and livelihoods flourish.

For the company, to register the world's first supercritical thermal power project under the Clean Development Mechanism (CDM) of the Kyoto Protocol and also set up Asia's first Ultra Super Critical plant, it is just the beginning of the continuing journey of goodness.



Adani Total Gas Limited (ATGL)

Adani Total Gas Limited (ATGL) is India's leading city gas distribution (CGD) company, fuelling the nation's clean energy aspirations through an expanding network of piped gas infrastructure and CNG stations. Committed to energy transition for a greener tomorrow, ATGL, along with its equal partnership JV company Indian Oil Adani Gas Pvt Ltd. (IOAGPL), serves residential, industrial, and commercial customers across 52 Geographical Areas (GAs), covering 124 districts and 14% of the nation's population. The company has diversified into adjacencies like electric vehicles (EV) charging, compressed biogas, and Liquefied Natural Gas (LNG) for long-haul transportation and mining. It also has a 50:50 joint venture to manufacture mechanical and smart gas meters.

City Gas Distribution:

- Over 903 CNG stations, ensuring convenience and hassle-free travel
- More than 9.75 lakh residential consumers
- Over 9,347 industrial and commercial consumers
- 23,265+ inch km of steel pipeline

Adani TotalEnergies E-Mobility Ltd.:

- Presence across 22 states with 600+ charging points open-to-public and another 1000+ under development

Adani TotalEnergies Biomass Ltd.:

- Successfully commissioned Phase-1 (225 TPD) of India's largest agri-waste to CBG plant at Barsana, UP, with total capacity of 600 TPD, expected to produce 42 TPD of CBG and 217 TPD of organic fertiliser at its full capacity
- ATBL is also setting up municipal waste-based CBG plants in Ahmedabad (500 TPD) and Rajkot (250 TPD), in Gujarat

Incubating emerging opportunity of LNG for long-haul and heavy-duty vehicles and mining segment, with plans to set up 50 LNG retail outlet across major highways, ports, mines, and industrial hubs across the country.

Verticals:

Piped Natural Gas

E-Mobility

LNG for Transport & Mining

Auto Compressed Natural Gas

Compressed Bio Gas





Adani Enterprises Ltd.

Growth is entitled to change, but the goodness that it shapes is everlasting. Adani Enterprises Limited, the flagship entity of the Adani Group, operates as the fastest-growing, diversified group with business interests across natural resources, edible oil, defence and aerospace, airports, data centres, and solar module manufacturing. The Group is ensuring that the impact trickles down to the remotest corners of the country. When electricity reaches every household through the timely availability of resources, access to basic necessities is enjoyed the way it is meant to be, and a farmer is able to feed his family heartily only because he gets his fair share for delivering quality food grains, which are stored and distributed most efficiently while providing a healthy cooking medium. Through Defence and Aerospace, we are committed to helping India achieve self-reliance in defence and security. Turning India's transit gateways into world-class destinations, we are committed to offering the best-in-class airport infrastructure to passengers, ensuring the most seamless and secure airport experience. For us, the nation is brimming with opportunities that can help bring about change. In doing so, we contribute to the creation of a better world.

Verticals:

Integrated Resource Management

Natural Resources

Adani Wilmar*

Agri Fresh

Defence and Aerospace

Roads, Metro, Rail, and Water

Solar Manufacturing

Airports

Data Centre**

Electrolyser Manufacturig

Bravus Mining and Resources (Australia)

Wind Turbine Generator Manufacturing

Green Hydrogen and its derivatives

*50:50 venture between Adani Enterprises Ltd. and Wilmar

**50:50 venture between Adani Enterprises Ltd. and EdgeConneX



Solar Manufacturing

Contributing to the nation's journey of becoming energy self-reliant, Adani Group ventured into what is known to be the pathway to a greener world, Solar Manufacturing in 2017.

Adani Solar has been India's 1st and largest vertically integrated solar PV manufacturer with 4 GW cells & modules and 2 GW of ingots & wafers manufacturing capacities.

Adani Solar produces Monofacial & Bifacial PV modules in TOPCon & MonoPERC technologies of M10 and G12 footprints with a power class of 535-660W, module bifaciality of 21-22%, and a target bifaciality of 75-85%. The company continues to evaluate emerging technologies and is committed to offering those too as it expands capacities.

It is the only Indian Solar Panel Manufacturer to be ranked Top Performer 7 years in a row by Kiwa PVEL, an independent test lab in the USA. Adani Solar modules are regarded as the most trustworthy and bankable, and have constantly been ranked in Bloomberg's Tier-1 list of module manufacturers.

Adani Solar's modules have been well accepted in India and in the world too. Since its inception, the company has shipped over 10 GW of modules to the most discerning customers in India and in the USA.

The company's vision is to build the nation's or world's first and only geographically co-located, fully integrated, and comprehensive solar manufacturing ecosystem of 10 GW at Mundra, India. Full PV chain vertical integration (Metallurgical-Grade Silicon, Polysilicon, Ingots, Wafers, Cells, and Modules), will be supported by ancillary units (Solar Glass, Encapsulants, Backsheet, Aluminum frames, Tracker, etc.), all on a single campus – the Mundra Electronic Manufacturing Cluster, spanning an area of over 800 acres. Adani Solar's manufacturing facilities housed in green buildings are configured to ensure the absorption of any future technological upgrade.

Adani Solar is committed to supporting and helping accelerate the world's ambitious goals in clean energy and climate control.



Wind Manufacturing

Adani Wind, the wind energy solutions division of Adani New Industries Limited (ANIL), is focused on enabling the clean energy transition globally.

Aligned to bolstering India's energy security, Adani Wind is strengthening the domestic wind manufacturing ecosystem. The company's integrated manufacturing ecosystem for the Wind Turbine Generator (WTG) is located in Mundra, Gujarat. The company envisions becoming one of the leading global wind Original Equipment Manufacturers (OEM) and is ramping up the Mundra facility to 5 GW. With an in-house technology centre established in Rostock, Germany, and technology collaborations with leading academic and research institutes, Adani Wind is focused on developing technologically advanced next-generation Wind Turbines.

Adani Wind has developed one of the world's most powerful onshore wind turbines of 5.2 MW capacity. It is a game changer for the global wind energy sector. The 5.2 MW wind turbine, developed in collaboration with Wind2Energy (W2E) from Germany, features a rotor diameter of 160 meters with a swept area of 20,106 square meters, equivalent to 4 football fields, and a tip height of 200 and 220 meters, which is higher than the Statue of Unity. It will work at wind speeds as low as 3 meters per second (mps) and up to 20 mps, reaching its optimum power production at around 12 mps wind speeds. The 5.2 MW wind turbine is listed in the Revised List of Models and Manufacturers published by the Ministry of New and Renewable Energy (MNRE), India.

Adani Wind is committed to fostering sustainable growth and environmental stewardship for a cleaner and greener planet.



H₂



CAUTION

Green Hydrogen

Green Hydrogen has the potential to bolster India's energy self-reliance.

The 'National Hydrogen Mission' aims to promote the production of clean hydrogen, which will diversify India's range of alternative energies. This could position India as an exporter of green energy. As a significant contributor to India's renewable growth, Adani Group aims to play a vital role in the country's green hydrogen initiative.

Adani Green Hydrogen, a subsidiary of Adani New Industries Ltd., is working towards establishing one of the world's largest integrated Green Hydrogen Hubs, providing a wide range of hydrogen solutions. Our integrated renewables and hydrogen electrolyser projects, combined with large-scale downstream products such as green ammonia, green methanol, and Sustainable Aviation Fuels (SAF), create an opportunity to produce hydrogen at \$1/kg, significantly lower than domestic peers and imported fossil fuels. We are committed to reducing costs to produce Green Hydrogen through vertical integration, with a focus on large-scale projects covering the entire supply chain. Our existing giga-scale manufacturing of solar modules, wind turbines, and electrolysers (in collaboration with Australia-based Cavendish Renewables Technology and Italy-based Hydep), along with in-house engineering, procurement, and construction capabilities, will pave the way for green hydrogen and its derivatives production from 2027 onwards, all within a single location in Mundra. Furthermore, Mundra Port will facilitate the entire flow of goods and services from source to end consumption, including the export of hydrogen derivatives, thereby addressing challenges related to long-term storage and transportation.

By 2027, we plan to achieve 1 MMTPA of Green Hydrogen production, with further expansion in the pipeline. Additionally, we have been granted a 198.5 MW electrolyser manufacturing capacity by SECI under the PLI scheme Tranche-1.

Adani Green Hydrogen is well-positioned to emerge as one of the leading global producers of Green Hydrogen.



Agri Fresh

Adani Agri Fresh, a key player in the fresh fruit business, continues to redefine the agricultural supply chain with its robust operations in the sourcing, storage, and marketing of premium fruits, including apples, grapes, and mangoes. Our commitment to quality is supported by significant investments in state-of-the-art infrastructure, such as advanced cold storage facilities, grading & packing facilities, ensuring the freshness and quality of our products from farm to market. We have marked a significant milestone in transforming the apple growing and storage ecosystem in Himachal Pradesh. Through our strategic initiatives, we have expanded our footprint in the fresh fruits sector under our brand 'Farm Pik', supported by a strong sales force dedicated to excellence.

As we continue to grow and innovate within the F&V sector, Adani Agri Fresh remains committed to sustainable practices and the upliftment of our farmer partners, ensuring a positive impact on the communities we serve while meeting consumer needs for fresh, high-quality fruits.



Natural Resources

Our journey began with the goal of assisting the nation in meeting its long-term energy needs and achieving self-reliance by providing critical inputs for the economy and industry. Presently, our business is versatile and dynamic, encompassing a range of industries, including Mining (Coal, Iron-Ore, Bauxite, and Limestone), Trading (Integrated Resource Management, Bunkering, Liquefied Petroleum Gas, and Aviation Turbine Fuel), and Metals (Copper and Aluminum). Our commitment is to promote sustainable practices through mining, manufacturing, and trading, all aimed at building a brighter and better India.

To fuel our growth consistently, we have established a high-performance work culture. People, Processes, Infrastructure, Networks, IT & Technology, and Analytics have been some of the key enablers for the same.

Our Group believes in 'Growth with Goodness' and at Adani Natural Resources, we are committed to sustainable and socially responsible activities in the geographies where we operate. We go beyond compliance to set industry benchmarks by contributing to communities and ecology. For us, maximising shareholder value is essential, but nurturing social value is far more critical. An equitable and sustainable future is our driving force.



Defence & Aerospace

Adani Defence & Aerospace is committed to nation-building, poised for exponential growth in India. Aligned with the Aatmanirbhar Bharat initiative, we strive to elevate India's defence capabilities to global standards, emphasising innovation, sustainability, and national security.

To foster indigenous expertise and strengthen the domestic defence industry, we continue to make strategic investments in unique products and technologies working with Indian small and medium-sized businesses and start-ups, thereby enabling us to position India as a key player in the global defence market.

Adani Defence and Aerospace boasts several 'firsts' to its credit – from being India's first private sector military UAV manufacturer to establishing India's first private small arms and ammunition facility and the country's first private sector Kamikaze Loitering facility. This reinforces the company's unwavering dedication to nurturing a domestic defence ecosystem.

With pioneering achievements and unwavering support to the Indian Armed Forces, we are shaping India's defence landscape with cutting-edge solutions.



Airports

Adani Airport Holdings Ltd. was incorporated in 2019 as a 100% subsidiary of Adani Enterprises Ltd., the flagship company of the Adani Group. In line with its vision to be the global leader in integrated infrastructure and transport logistics, Adani Group made its maiden venture into the airports sector by emerging as the highest bidder for the operation, management, and development of six airports: Ahmedabad, Lucknow, Mangaluru, Jaipur, Guwahati, and Thiruvananthapuram, and signing concession agreements with the Airport Authority of India for all six airports. AAHL also holds 74% in Mumbai International Airport Ltd., which in turn holds 74% in Navi Mumbai International Airport Limited*. With eight airports in its management and development portfolio, AAHL is India's largest airport infrastructure company, accounting for 23% of passenger footfalls and 30% of India's air cargo traffic.

Passenger count for FY24 by Adani Airports: **88.56 mn**

*Navi Mumbai International Airport is a greenfield project currently under construction phase.

Rugby Run Solar Farm

Rugby Run Solar Farm is part of Adani Group's world-leading renewable energy portfolio that is helping progress the global transition to a lower emissions future. Located near the town of Moranbah in central Queensland, Australia, Rugby Run generates 185,000 MWh of power each year. The facility has been consistently among Australia's best-performing solar-energy assets since it was switched on in October 2019.



North Queensland Export Terminal

The North Queensland Export Terminal* (NQXT) is a dedicated deep-water coal export terminal that services and supports Australia's significant resources sector and the central Queensland community of Bowen in which it operates.

The NQXT has a nameplate capacity of 50 million tonnes per annum, provides strategic export access to nearly a dozen major resource production companies, and operates in the Bowen Basin or the Galilee Basin.

The Bowen and Galilee basins are among Australia's most significant resource provinces. The NQXT has been operating safely, responsibly, and efficiently within the Port of Abbot Point since 1984. Today, Abbot Point Operations* (APO) manages the operations of the NQXT.

*Both NQXT and APO are part of Adani Group's Australian businesses, delivering integrated energy and infrastructure services under the Bravus banner.

Bowen Rail Company

Bowen Rail Company is part of Adani Group's Australian businesses, delivering integrated energy and infrastructure services under the Bravus banner.

The Bowen Rail Company connects Queensland's high-quality resource producers to the North Queensland Export Terminal and international markets. The business' operations support the community of Bowen and drive economic prosperity for the nation.

The Carmichael Rail Network is an approximately 200-kilometre multi-user railway that connects central Queensland's Galilee Basin mining region to the Newlands rail line and the North Queensland Export Terminal. The Bowen Rail Company is the rail operator on the Carmichael Rail Network, and Bravus Mining and Resources' Carmichael mine was the railway's foundation customer.

The railway was designed to carry 40 million tonnes per annum and has the capacity for further expansion.



Bravus Mining and Resources

Bravus Mining and Resources owns and operates the Carmichael coal mine in the Galilee Basin in central Queensland, Australia.

The Carmichael mine is an open-cut thermal coal mine that produces in the order of 10 million tonnes of coal each year for the export market. Bravus Mining and Resources has a focus on local jobs and procurement, and the majority of the people that work at the mine are from regional areas of Queensland.

Bravus Mining and Resources is committed to respecting the environment, and the business has some of Australia's most comprehensive environmental plans and strategies in place to ensure healthy air, land, and water in the area of the Carmichael mine.

Bravus Mining and Resources likewise supports its local communities, especially Indigenous Traditional Owners who work in partnership with the mine under rigorous Cultural Heritage Management Plans to preserve any important cultural sites and practices.





Ambuja Cement plant at Bhatapara, Chattisgarh



ACC Ltd. cement works plant at Barmana, Himachal Pradesh

Ambuja Cements Ltd.

Ambuja Cements Limited is one of India's leading cement companies. Along with its subsidiaries, ACC Ltd. and Sanghi Industries Ltd., the total cement capacity of Adani Group stands at 89 MTPA with 22 integrated cement manufacturing plants and 21 cement grinding units across the country. Ambuja has provided hassle-free, home-building solutions with its unique sustainable development projects and environment-friendly practices since it started operations. The company has many firsts to its credit – captive ports with eleven terminals that have facilitated timely, cost-effective, and cleaner shipments of bulk cement to its customers.

ACC Limited

ACC Limited is one of India's leading producers of cement and ready-mix concrete. It is a member of the diversified Adani Group – the largest and fastest-growing portfolio of diversified sustainable businesses. ACC has 20 cement manufacturing sites, over 86 concrete plants, and a nationwide network of channel partners to serve its customers. With a world-class R&D Centre, the quality of ACC's products and services, as well as its commitment to technological development, make it a preferred brand in building materials. With sustainability at the core of its strategy, ACC is the first Indian Cement Company to sign the Net Zero Pledge with Science-Based Targets.

NDTV Limited

India's most trusted media network

NDTV was rated No. 1 in terms of trust across all forms of Indian media three times in a row. Source: The Brand Trust Report

Experienced editorial team

Renowned journalists and experts from various fields contribute to in-depth analysis and insightful reporting.

Wide global presence

Our international footprint enables us to provide a unique perspective on global events and issues.

Diverse content portfolio

In addition to news coverage, we offer special programmes, debates, and documentaries.

Strong digital and technology focus

Embracing digital transformation by delivering digital-first content and leveraging new technologies.

Dynamic leadership team

Driven by the management team of accomplished professionals.

Sound corporate governance

Majority of the Board comprises of Independent Directors, ensuring an impartial perspective in decision-making.





Adani Realty

At Adani Realty, we are not just building structures; we are shaping the future of India. Our mission of **'Growth with Goodness'** and commitment to **'Nation Building'** drives us to create integrated townships and state-of-the-art commercial projects that prioritise quality, innovation, and customer-centricity.

Our ambition extends beyond becoming India's largest real estate firm—we **aspire to be a top global player**, revolutionising the industry by aligning with the diverse aspirations and modern lifestyles of new-age India.

Our vision is to craft environments that seamlessly blend comfort, community, and quality of life. As we strive to be a world-class real estate brand, our focus is on enriching lives and fostering sustainable development. We are dedicated to setting **new standards, embracing innovation, and building trust** within the real estate sector.

Achievements and Capabilities:

- **Delivered Projects:** Over 24 mn sq ft completed with 61 mn sq ft under development.
- **Diverse Portfolio:** Includes residential, commercial, retail, hospitality, malls, and lifestyle clubs.
- **Geographical Presence:** Located in Mumbai, Pune, Ahmedabad, and Delhi NCR with plans to expand to other cities.
- **Recognitions:** Awarded 'Best Realty Brand' and 'Iconic Brand'.
- **Innovative Practices:** Implementing Building Information Modelling (BIM) and renewable energy integration.
- **Urban Regeneration:** Engaging in urban renewal projects across various Indian cities.

Our commitment to quality, sustainability, and community growth underscores our position as a trusted industry leader. By embracing innovation, digital dexterity, and customer centricity, we deliver on our promises and craft a sustainable legacy. Our Digital Incubation Centre drives forward-thinking solutions, ensuring we stay ahead with world-class practices.

As we continue to innovate and expand, we are not just building spaces but transforming how the world lives, works, and thrives.



Venturing into new avenues

- Data Centre
- Road, Metro, Rail, and Water
- Digital
- Copper
- Petrochemicals



Adani One envisions providing convenient and secure access to a wide range of products and services offered by the conglomerate's B2C businesses and its partners with a focus on enhancing consumer satisfaction and user experience. By consolidating services into one integrated platform, the app aspires to eliminate the need to navigate between multiple applications and presents businesses with an opportunity to extend their customer reach and enhance engagement levels.

In the platform's inaugural theme, Adani One aspires to bring all "travel" services onto a single platform. A single click lets a user conveniently choose from a range of unique offerings like Shopping at Duty-Free, Pranaam Meet and Greet Service, Flight, Train, and Cab Booking, etc. Also, the Adani Rewards Loyalty Program offers users Reward Points on almost all transactions on the platform. Adani One will be able to cater to the end-to-end travel needs of a passenger once its platform's first theme is fully live. It has the potential to become the go-to travel platform for India, making it a true game changer in the digital travel ecosystem.



AdaniConneX

AdaniConneX, a 50:50 joint venture between the Adani Group and EdgeConneX, envisions building a 1 GW data centre infrastructure platform by 2030. EdgeConneX, a global data centre operator with the decade-long experience in building and operating 80+ state-of-the-art data centres in 53 unique markets, empowers AdaniConneX with the unparalleled advantage of delivering the global benchmark across data centre design, engineering, and operation. Rich with decades of experience in building multiple megastructures across diverse sectors in India, AdaniConneX brings an unparalleled advantage to Adani Group's eco-system to deliver digital infrastructure at scale with speed and safety.

Key Achievements:

- 210+ MW cumulative orders booked till FY24
- Chennai data centre delivered 100% operational availability throughout FY24
- Achieved cumulative Safety Man Hours of 15.7 mn
- 1 GW of data centre capacity by 2030

Diversified Offerings:

- Built-to-Suit (BTS) Solutions
- Full stack Energy-as-a-Solution (EaaS)
- Co-location
- Managed Services

Chennai 1: Strategically located within the SIPCOT IT Park in Siruseri, a rising digital hub, AdaniConneX's state-of-the-art Chennai 1 facility is live with a capacity of 17 MW that will scale up to 33 MW at full capacity. The 'Chennai 1' campus hosts Tamil Nadu's first pre-certified IGBC platinum-rated data centre. The facility is powered with Renewable Energy, offering enterprises and hyperscale customers sustainable energy choices.

Awards:

- Frost and Sullivan Company of the Year 2023 in South Asian Data Centre Operation and Infrastructure category
- Digital Infrastructure Project of the Year Award at the Tech Capital Global Awards 2023

Road, Metro, and Rail

To continue our nation-building efforts, we remain committed to building infrastructure to boost India's socio-economic growth. With multiple infrastructure businesses established across India, we leverage our project management expertise to create synergies for Road, Metro, and Rail infrastructure development. Adani Group is confident about positioning itself as a dominant player in the Road, Metro, and Rail sectors with its extensive experience in developing infrastructure for National Highways, Expressways, Tunnels, Metro-Rail, and Railways. Adani Road Transport Ltd. has already bagged 14 projects with more than 5,000 lane km spread over ten states in India – Chhattisgarh, Telangana, Andhra Pradesh, Madhya Pradesh, Kerala, Gujarat, West Bengal, Odisha, Uttar Pradesh, and Maharashtra. The company has also recently acquired the Maharashtra Border Check Post Network Ltd., which comprises 24 border check posts in Maharashtra.



Water

Water remains an integral part of sustainable development initiatives. With growing concerns about the supply and availability of water resources, policymakers are focussing on infrastructure projects that aid its conservation. Adani Water Ltd. has already bagged and is executing two projects under the prestigious "Namami Gange, One City One Operator" framework in Prayagraj, Uttar Pradesh and Bhagalpur, Bihar and one Lift Irrigation Project in Madhya Pradesh. The company is also focussing on opportunities in Wastewater Treatment, Irrigation Infrastructure Development, River interlinking Projects, Large Water Supply and Water Distribution Projects, and Desalination Projects to produce potable water for general consumption or industrial use.



Petrochemicals

Adani Group is exploring opportunities to develop a petrochemical cluster at Mundra. There will be a growing opportunity to consume green fuels and moderate the national carbon footprint. We aim to produce a range of green fuels and energy to help India decarbonise quickly.

Copper

Copper demand is expected to grow with the emergence of new 'smart cities' projects and as India embarks on its journey to bolster its renewable energy infrastructure. Adani Group (through its 100% subsidiary Kutch Copper Limited) intends to emerge as the world's largest single-location copper smelting complex by 2030. The venture will manufacture copper and its by-products, precious metals (gold and silver), and sulphuric acid, which can be partly converted to phosphoric acid. It may also lead to the exploration of value-added downstream opportunities like copper tubes.



Adani Foundation

Goodness is a practice that ought to be ingrained in those who truly believe in it. We, at Adani, leave no stone unturned to bring happiness and livelihood at every step of our journey towards Nation Building. The Adani Group invests about 2% of its total profit in social initiatives through the Adani Foundation, its community engagement arm.

Since 1996, Adani Foundation, the community engagement arm of the Adani Group, has remained agile and deeply committed to making strategic social investments for sustainable outcomes across India. It is empowering and enriching the lives of children, women, youth, and marginalised communities in the core areas of education, health & nutrition, sustainable livelihood, community development, and climate action. The strategies of the Foundation are integrated in national priorities and global Sustainable Development Goals (SDGs). Adani Foundation is currently operating in 6,769 villages across 19 states, positively impacting 9.1 million lives.



1. Education

In FY2023-24, Adani Foundation made significant strides in transforming education, benefiting thousands of students through various initiatives. 3,375 students received free education at four Adani Vidya Mandirs. 29,922 students received education in 32 Adani Schools. 37,389 students from 254 government primary schools were covered under project Utthan. Project Udaan benefitted 50,747 students, covering 552 government schools.

Adani Vidya Mandirs (AVMs) provide an enabling learning environment for bright students from underserved communities. Located in Ahmedabad, Bhadrashwar, Surguja, and Krishnapatnam, AVMs reflect Adani Foundation's commitment to underprivileged sections of society. Started in 2008 with 134 students, today over 3,000 students call AVMs their 'Alma Mater'. Our schools blend modern techniques with Indian values in a lush green environment, enhancing physical, mental, social, and spiritual growth.

Adani schools prepare students to lead purposeful lives while acquiring knowledge, skills, and values. We emphasise tech integration, student well-being, and parental partnership to create an engaging learning environment. Our curriculum focusses on academic excellence, sports, and value education, promoting inclusive learning and celebrating individual differences. E.g., Srushti Kale of NRC School, Mohone, Kalyan, scored 100% in the MSBSHSE 2024.

Benchmarking Initiatives during 2023-24:

- AVM, Ahmedabad, scored 226/250 in the NABET assessment, one of the highest ever scored by a school under QCI.

- Adani Sainik School, Krishnapatnam, rose from 14th place in April 2023 to No. 1 nationally in March 2024 among newly launched Sainik Schools.
- Partnered with the NIE, Singapore, to develop a STEM curriculum framework tailored to the Indian context.
- AVM, Ahmedabad, is the first private school in Gujarat to collaborate with UNICEF on the Campus Knowledge Initiative and with UNESCO on ASPnet.
- Our students explore innovative and sustainable solutions to real-world problems and publish their findings in international journals.

Utthan: Enabling Learning, Improving Outcomes

Utthan enhances learning outcomes in government schools by enhancing the quality of education, mainstreaming progressive learners, and creating an enabling learning environment. Utthan Sahayaks, trained supplementary teachers from the community, strengthened foundational literacy and numeracy. This program transforms adopted schools into model schools and facilitates bridge and coaching classes for the deserving students.

Project Udaan: Bridging the Gap

Project Udaan ensures students gain practical knowledge through exposure visits, helping them understand real-world applications of their learning.

Ultimately, it's about lighting the spark of curiosity, nurturing the flame of knowledge, and empowering every child to realise their full potential. Adani Foundation is proud to be a part of this educational journey every step of the way.

2. Health & Nutrition

Adani Foundation is investing in community health by building and strengthening institutions. It is facilitating healthcare services in the form of tertiary care and doorstep primary care. The aim is to ensure last-mile access of knowledge, awareness, coupled with quality & affordable health services, to vulnerable populations. Our interventions include tackling Malnutrition, Mobile Health Care Units, Wellness Centres and Rural Clinics, Health Camps, and establishing and operating multi-speciality hospitals. We are spreading knowledge in the community towards tackling Malnutrition and Anemia as part of our Fortune SuPoshan programme. It is catering to children in the age group of 0-5 years, adolescent girls, pregnant and lactating women, and women in the reproductive age.

There are 11 Rural Clinics and Wellness Centres that serve about 35,000 people annually. Adani Foundation also operates Mobile Health Care Units (MHCUs), providing enhanced access to quality medical care in remote locations. MHCUs are armed with qualified medical professionals, generic medicines, and basic diagnostic tools. Currently, 17 MHCUs cover 7.5 lakh people, and in FY2023-24, they provided 3.16 lakh medical consultations. Health Camps are providing essential screening services and generating awareness, along with necessary treatment and referrals. Regular general and specialised camps are held for cancer screening, gynaecology, eye health, paediatrics, etc. In FY2023-24, 350 such health camps benefitted 27,994 people.

Adani Foundation also runs two hospitals in Gujarat - Gujarat Adani Institute of Medical Sciences (GAIMS) in Bhuj and Adani Hospital in Mundra. GAIMS is the first Public-Private-Partnership (PPP) endeavour between the Government of Gujarat and Adani Education & Research Foundation. It is the only medical college and multi-speciality modern



hospital (G.K. General Hospital) in Kutch district. In FY2023-24, it catered to 3.94 lakh patients in the Out-Patient Department (OPD) and 42,239 patients in the In-Patient Department (IPD). The **Adani Hospital in Mundra** is a 100-bed secondary care hospital catering to the healthcare needs of the local population of Mundra and neighbouring areas. It is committed to grooming medical professionals and providing clinical services at affordable rates. In FY2023-24, it provided 46,642 OPD and 2585 IPD services.

The Adani Foundation's Fortune SuPoshan is a community-driven initiative aimed at addressing malnutrition and anaemia amongst children (0-5 years), adolescent girls, pregnant/lactating mothers, and women in the reproductive age group. The project takes a comprehensive life-cycle approach, focussing on both preventive and curative measures to bring about behavioural change in community members.

Currently, there are 430 trained Sanginis actively engaged to cover 2,46,252 households across 1,169 villages and 178 slums, spanning 11 states in the country. Together, these Sanginis have reached out to a total of 90,576 children below 5 years, 44,040 adolescent girls, and 1,40,267 women during FY2023-24.



3. Sustainable Livelihood

Adani Foundation is dedicated to enabling wealth creation at the grassroots by establishing a self-sustaining ecosystem that harnesses human potential and community resources for socio-economic progress. Our efforts cover on-farm, off-farm, and non-farm areas, aiming to boost, diversify, and sustain incomes. Our initiatives include natural farming, animal husbandry, dairy development, and empowering women-owned enterprises through knowledge, skills, and market connections. The focus is also on facilitating lift irrigation and micro irrigation to bring more land under irrigation coverage. Adani Saksham, our skilling programme, imparts skill-based training to youths, thereby increasing their employability and entrepreneurial abilities. It is now incorporating advanced technology such as Augmented Reality-Virtual Reality (AR-VR) and launching courses in the Metaverse.

The Foundation is committed to boosting sustainable livelihood opportunities for Indian artisans by promoting the timeless arts and crafts of our country through project **Sathwaro**.

In FY2023-24, the focus remained on scaling up drip irrigation, covering more than 2,744 acres of farmland. We also installed 19 lift irrigation units across 2,611 acres of land, directly benefitting 6,419 farmers. This resulted in an additional income generation of Rs 25,000-35,000 per year and work for 10-15 days/acre for farm labourers.

With the installation of 458 units of biogas and 2,245 units of vermicompost units, we've contributed to enhancing the incomes of farming families. The Foundation's continued impetus on facilitating the formation and strengthening of SHGs (especially of women) has generated a combined turnover of Rs 42.42 crores (732 SHGs and 4 FPOs).

Saksham, or Adani Skill Development Programme (ASDC), is a skilling program that focusses on bridging the skill gap among the youth, making them employable, and thus contributing to the nation's growth story. The program is in line with the Government of India's Skill India Mission. Saksham has partnered with the National Skill Development Corporation (NSDC) and has trained more than 1,50,000 young people across 15 states in India.

4. Community Development

Adani Foundation is committed to the overall well-being of the community through enablers, including need-based safe public infrastructure, providing access to applicable government schemes, ensuring access to clean and safe drinking water, promotion of sports for youths, protection and promotion of

art & heritage, and last but not least responding to humanitarian and natural calamities.

Adani Foundation has been quick to respond to natural calamities in all parts of India. In FY2023-24, it has reached out to affected people during floods in Chennai and Bharuch (Gujarat) and Biporjoy cyclone in Kutch region.

In the Bahanga Bazar train accident that took place in Balasore, Odisha, on June 2, 2023, Adani Foundation sprang into action to identify the victims and facilitate help. It fulfilled the promise of Adani Group of taking the responsibility to provide education to the children who lost their parent(s) in the tragedy. The Foundation swiftly transferred the school fees of these children into their respective bank accounts. The Foundation has committed that it will support the complete education of these students up to high school. Those studying in classes 11th and 12th would receive one-time financial assistance. In FY2023-24, the Foundation has spent Rs 18 lakh towards facilitating the education of these children.

In sports, Jammu and Kashmir's Para Cricketer Amir Hussain Lone was looking for help to continue pursuing the sport. Adani Foundation reached out to him with financial aid after Adani Group's Chairman lauded the skills and perseverance of Amir on a social media platform.

5. Climate Action

Adani Foundation focusses on water conservation, waste management, and increasing tree coverage across our sites in India. It is working to rejuvenate and restore village ponds, recharge wells, install roof rainwater harvesting structures, and build check dams & bunds towards a water secure and climate resilient future.

For efficient water conservation and management, the Foundation has constructed 21 check dams and revived 400+ ponds and streams across various CSR sites in India. This initiative has helped boost the water storage capacity to 13 million cubic metres, bringing more than 26,000 acres of land under irrigation.



Group Safety

Occupational Health & Safety (OH&S)

At Adani, we are committed to the highest standard of Occupational Health & Safety for our employees, business partners, contractors, and associates. It is one of the key values for us to achieve sustainable long-term value creation for all our stakeholders and has enabled us to maintain consistent standards of Risk Control & Risk Acceptability across our diverse range of business portfolios – Infrastructure, Energy, and Manufacturing Value Chain.

We believe that people are the most critical component in business, and **"Harnessing Safety"** amongst them through "Responsible Stewardship" and "Safety Mindfulness" can facilitate achieving a resilient organisation. This is being achieved by leveraging Human Performance to Safety wherein Safety is not defined by the absence of incidents but by the presence of capacity through working safely, reliably, and productively. This cultural shift in Safety fosters a positive culture while employees work in a complex and adaptive work environment.

#SafetyCulture

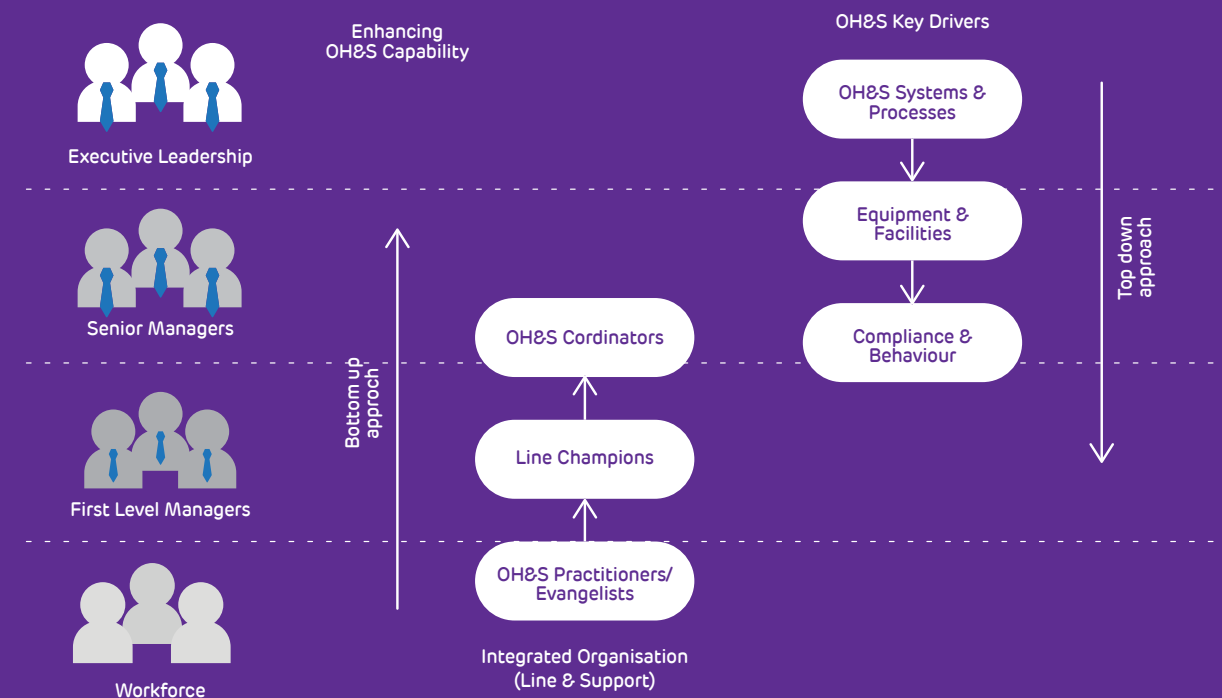
Through **"#SafetyCulture"** – our flagship brand identity for promotion of safety culture, we drive various safety engagement processes for internal and external stakeholders through national programmes - National Safety Week, National Road Safety Month, etc., as well as work towards community safety especially school children and their teachers, to foster safety consciousness.

Safety Management System & Assurance

- Integrates all OH&S management components of our businesses into one coherent system
- Upholds the ecosystem for implementing proactive & sustainable business and drives continuous improvement
- Safety Assurance program runs diagnostics for effectiveness of safety management system and relies on assessment of safety performance, change management process, and continual improvements.

Safety Excellence

The Group has embarked on a transformational journey for progressing towards a world-class safety organisation. This is propelled by the commitment and accountability of our Leadership team through the 'top down & 'bottom up' approach, where we concentrate safety efforts on the bottom of the pyramid – 'last mile worker-as well as the top of the pyramid – 'executive leadership' in tandem.



Awards & Accolades 2023-24

- British Safety Council – Five Star Occupational Health and Safety Audit: Adani Power
- British Safety Council – International Safety Award: Adani Cements
- CII SHE Excellence Awards 2023: Adani Cements
- FICCI Road Safety Award – "Outstanding commitment in Road Safety by the corporate": ATGL
- APEX India OH&S Platinum Award: Adani Cements
- OHSSAI Safety Gold Award: AGEL, Adani ConneX, RMRW
- 18th Edition CII Western Region SHE Excellence & Innovation Awards 2023: RMRW
- 15th CIDC Vishwakarma Awards 2024 in Large Construction category: RMRW



People and Culture

Our people are the key drivers of our core philosophy of 'Growth with Goodness'. As a people-centric organisation, we invest in them and empower them to create enriching careers with us. Our dynamic work environment nurtures individuality and intellectual curiosity while also encouraging creative thinking.

We believe that our workforce is our competitive advantage. Driving our vision and mission forward is a 43,000+ strong team of nation-builders that relentlessly work every single day to create extraordinary value for our customers and stakeholders. We perform with energy and enthusiasm, thrive on change, operate on trust, commitment, and courage, and leverage our team's diverse and unique talents in everything we do. We are resilient, solve problems rapidly, and are eager to take on fresh challenges every day.





www.adani.com

Adani Group
Adani Corporate House
Shantigram, S G Highway
Ahmedabad 382 421
Gujarat, India

